



Easy Chess Puzzle # 0121

By

G Bud Games
<https://gbud.in>

January 30, 2022

Contents

Easy Chess puzzle # 0121 - Mate in 1 move	3
Easy chess puzzle 0121	3
Solution to easy chess puzzle 0121	4
Solution 1	4
Right moves for the solution to the easy chess puzzle 0121	6
Explanation for the moves	6
Categories of easy chess puzzle 0121	6
easy chess puzzle 0121 chart	7
How to view the solution to easy chess puzzle 0121	9
How to get help for moves in the easy chess puzzle 0121	10
Play chess for free	11

List of Figures

1	Solve this easy chess puzzle 0121. Mate in 1 move @ https://gbud.in/gpgq1r1	3	
2	Solve this chess puzzle online with solution @ https://gbud.in/gpgq1r1	3	
3	Initial board position of easy chess puzzle 0121	4	
4	cx b5	5	
5	Bxd5#	5	
6	easy chess puzzle 121 chart 1	7	
7	easy chess puzzle 121 chart 2	8	
8	easy chess puzzle 121 chart 3	8	
9	easy chess puzzle 121 chart 4	9	
10	Click the solution button to view solutions @ https://gbud.in/gpgq1r1	9	
11	Click the help button to get help on next move @ https://gbud.in/gpgq1r1	10	
12	Solve more easy puzzles @ https://gbud.in/chsezpz	10	
13	Solve other puzzles @ https://gbud.in/chsgppz	10	
14	Play chess online for free. Solve puzzles and play with friends	11	
15	Solve this puzzle online by scanning this QR code or go to the link below	12	

Easy Chess puzzle # 0121 - Mate in 1 move

Solve this easy chess puzzle and improve your chess games through improvement of your chess strategies and chess tactics.

Puzzle No : 0121

Difficulty level : Easy

Description : Mate in 1 move

Next Move : Black

Player level : Beginner

Short URL for puzzle : <https://gbud.in/gpgq1r1>

Easy chess puzzle 0121

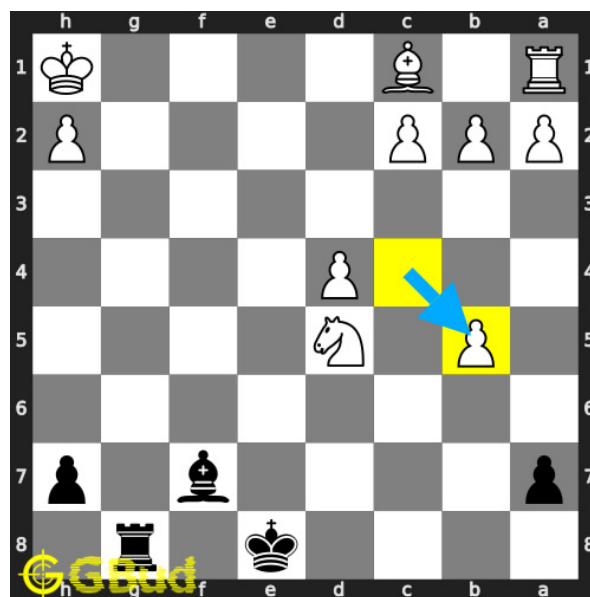


Figure 1: Solve this easy chess puzzle 0121. Mate in 1 move @ <https://gbud.in/gpgq1r1>



Figure 2: Solve this chess puzzle online with solution @ <https://gbud.in/gpgq1r1>

Dont forget to check out [chess puzzles](#), [easy chess puzzles](#), [medium chess puzzles](#), [hard chess puzzles](#) and [chess puzzles collections](#) .

Solution to easy chess puzzle 0121

At this puzzle, next **move** is by **Black**. The objective of the puzzle is to mate in 1 move.

See the interactive solution at the [puzzle page](#)

Solution 1

Initial board position This is the initial board position of easy chess puzzle 0121.

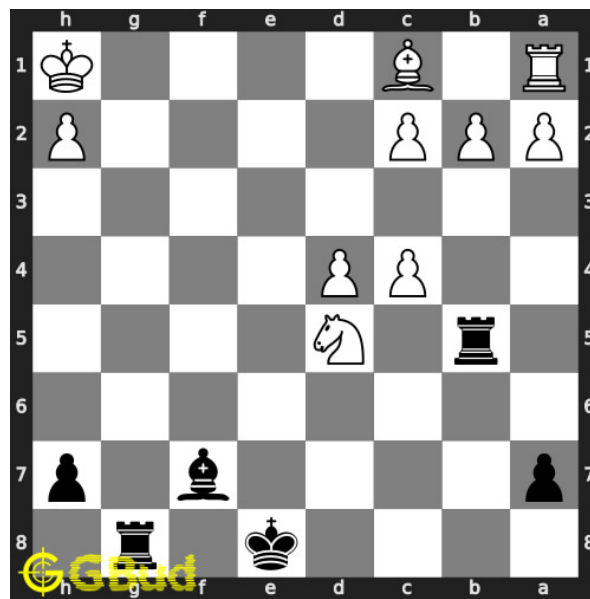


Figure 3: Initial board position of easy chess puzzle 0121

Move 1 Move by white

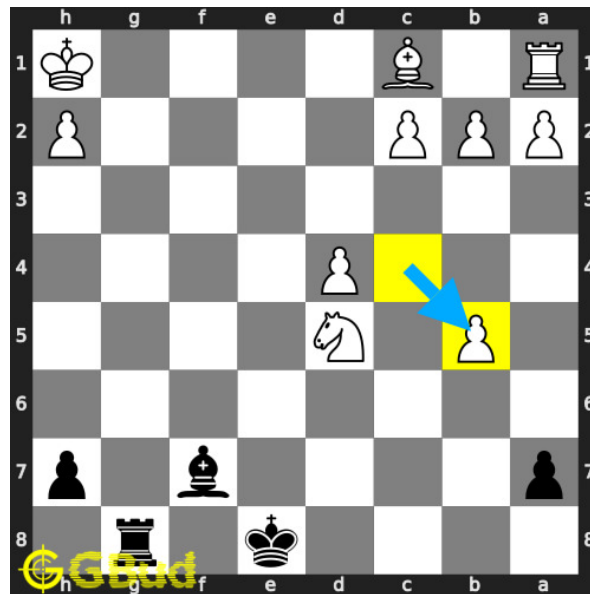


Figure 4: cxb5

opponent gained a free **rook**. but it is a mistake. the support to their **knight** is removed.

Move 2 Move by black

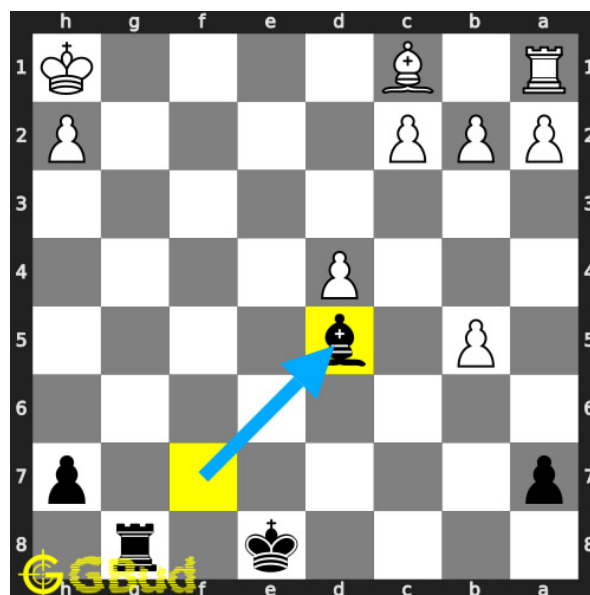


Figure 5: Bxd5#

you sacrificed the **knight**. your **bishop captures** opponent's hanging **knight** and **checkmate**. this is called morphy's **mate**. this is how you can **mate** in 1 **move**

Right moves for the solution to the easy chess puzzle 0121

Based on the objective of the puzzle, you have to make the right moves. Following are the right moves

1. Bxd5#

Explanation for the moves

1. cxb5 - Opponent gained a free rook. But it is a mistake. The support to their knight is removed.
2. Bxd5# - You sacrificed the knight. Your bishop captures opponent's hanging knight and checkmate. This is called Morphy's mate. This is how you can Mate in 1 move
3. For right move - Good effort. You have successfully utilised opponent's mistake to have a Morphy's mate.
4. For wrong move - You could have used your bishop to have a Morphy's mate. Do not stop trying

Categories of easy chess puzzle 0121

This easy chess puzzle falls in these categories.

1. [Easy chess puzzles](#)
2. [Sacrifice puzzles in chess](#)
3. [Mate in 1 puzzles in chess](#)
4. [Endgame puzzles in chess](#)
5. [Mate pattern puzzles in chess](#)
6. [Bishop puzzles in chess](#)

easy chess puzzle 0121 chart



Figure 6: easy chess puzzle 121 chart 1



Figure 7: easy chess puzzle 121 chart 2



Figure 8: easy chess puzzle 121 chart 3



Figure 9: easy chess puzzle 121 chart 4

How to view the solution to easy chess puzzle 0121

To view the [solution to this puzzle](https://gbud.in/gpgqlr1), follow the steps given below

1. Go to the [puzzle page](https://gbud.in/gpgqlr1)
2. Click the solution button (Key as shown [below](https://gbud.in/gpgqlr1)) to view the solution



Figure 10: Click the solution button to view solutions @ <https://gbud.in/gpgqlr1>

How to get help for moves in the easy chess puzzle 0121

To get help or the possible next moves in the puzzle, , follow the steps given below

1. Go to the [puzzle page](#)
2. Click the help button (exclamation mark as shown [below](#)) to get help or suggestion on next possible [move](#)



Figure 11: Click the help button to get help on next move @ <https://gbud.in/gpgqlr1>



Figure 12: Solve more easy puzzles @ <https://gbud.in/chsezpz>



Figure 13: Solve other puzzles @ <https://gbud.in/chsgppz>

Play chess for free

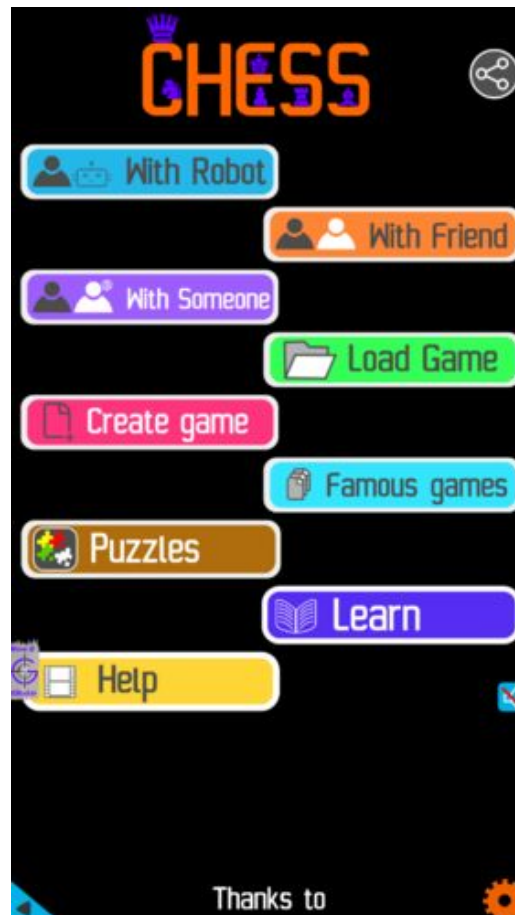


Figure 14: Play chess online for free. Solve puzzles and play with friends

Play chess for free at <https://gbud.in/chs>

We present you a platform to play chess online with friends for free. No need to install any app. You can play chess for free without registration or login.

Simple. You can do several chess related activities.

1. [solve chess puzzles](#)
2. [learn about chess](#)
3. [play chess with computer](#)
4. [play chess with friend](#)
5. [create your own chess games](#)

6. [fen viewer](#)
7. [fen editor](#)
8. [fen generator](#)
9. [pgn viewer](#)
10. [chess board editor](#)
11. [view famous chess games.](#)



Figure 15: Solve this puzzle online by scanning this QR code or go to the link below

<https://gbud.in/gpgq1rl>

Read the latest article on Easy Chess puzzle # 0121 - Mate in 1 move by scanning this QR code or click the link

Previous article : [« Easy Chess puzzle # 0120 - Pin and capture opponent's rook](#)

Next article : [Easy Chess puzzle # 0122 - Mate in 1 move »](#)

[Back to top](#)

[Contact Us](#)